

## EDL-RF™

*the wireless temperature network*

### **The MARATHON Advantage**

With our EDL-RF™ data loggers, collect, monitor and manage temperature data via wireless communication in real time. Avoid expensive installation costs for managing data. Now synchronize your warehouse, laboratory and mobile applications with our 2-way "high performance" radios. Up to 65,000 network addresses are available with our custom solutions.

Our software allows user selectable programming options including: Alarm settings and notification options, database creations with supervisory controls, sorting options for products, tracking numbers, dates, locations, statistical analysis, real-time temperatures and more. Now automatically transmit data at pre-selected intervals. Review all of your temperature profiles first thing in the morning, or upon request, you select.

The EDL-RF™ is a precision data collector and provides a low cost approach to monitoring all of your temperature needs. With the use of our special relay units, wireless connections can be extended 3,000 feet or more for laboratory or warehouse applications. Long range or short range, we can meet your exacting requirements with our multi-version models. For mobile applications, our wireless data collectors can be configured for transmission ranges exceeding 1/2 mile.

Measurement data is maintained in each logger so loss of wireless connection does not result in loss of stored values. Continuous monitoring for Alarm Conditions. Offsite notification via email to PC or cell phone should temperatures exceed user defined limits.

Fortune 500 companies demanding high performance wireless radio receives sensitivity this is the product for you

### **Temperature Range (two ranges)**

- 40 C to 72 C (-40 F to 160 F)
- 80 C to 30 C (-112 F to 86 F)

### **Temperature Accuracy**

- +/- 0.2C at center of range 0.5 C at extremes

### **Measurement intervals**

- 2 Sec increments to 4 hours

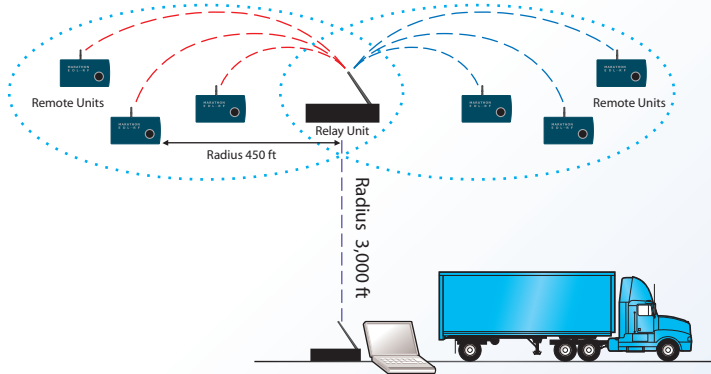
### **Number of measurements**

- 8,000, 16,000, 32,000, 64,000



# Marathon Wireless RF Specifications

## RF Wireless Temperature Recorder



### RF Module Specifications

#### General

Frequency  
902-928 MHz (Frequency hopping)

#### Supported Network Topologies

Peer-to-Peer, Point-to-Point,  
Point-to-Multipoint & Multidrop

#### Network

More than 65,000 addresses available

#### Encryption

256-bit AES Encryption

#### Performance

@ 9600 bps Throughput Data Rate

#### Indoor/Urban Range

Up to 1000' (300 m) depending upon model  
Up to 3000' (900 m) depending upon model (1Watt)

#### Outdoor

RF line-of-sight range  
Up to 18 miles (29 km) w/ dipole  
antenna and special radio

#### RF Data Rate

10,000 bps

#### Computer Interface

RS232 serial port or USB.

#### Receiver Sensitivity

-110 dBm -100 dBm

#### Power Requirements

Two AA Lithium Battery 3.6V - RF Transmission

#### Certifications

FCC Part 15.247  
Industry Canada (IC)

## Temperature Logger Specifications

#### Temperature Range:

-40C to 72C (-40F to 160F)  
-80C to +30C (-112F to 86F)

#### Temperature Accuracy:

1.0C at extremes; 0.2C at centre.

#### Temperature Sensor:

NIST traceable precision thermistor.

#### Memory EEPROM, Storage:

64K- Variable memory options

#### Measurement Intervals:

Programmable from 2 sec. to 4 hour interval

#### Start:

Push button and remote start via software

#### Alarm:

High and Low Alarm Limits set by temperature and time

#### Alarm Modes:

Continuous and cumulative  
Automatic or manual reset alarms

#### Indicators:

Alarm and power

#### User notification:

Alarm conditions on-screen via email and cell phone.

#### Accessories:

Optional Ribbon Probe

#### Power Source:

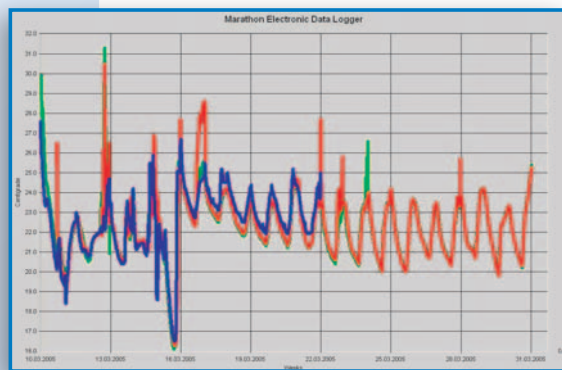
Single Lithium Battery 3V - Data Logger

#### Shelf Life - Data Logger:

3 year of continuous use data logging

#### Physical Properties:

Logger Size 3.61" x 1.11" x 4.78" (9.17cm x 2.82cm x 12.15 cm)  
Weight 6.2 OZ (176 g)



#### Software Features:

Start and end time, Real time display, Interval, User description, Alarm Values, Recording Status, Measurement Data, Language Selection, Temperature scale, Start delay, communicates with up to 65,000 loggers. 21 CFR part 11 compliant version available

#### Certifications:

CE Marking