

MARATHON PRODUCTS, INC.

EZ Logger Initialization & Reading Instructions

Initializing the EZ Logger

Start the **MDAS-Pro software** by double clicking on the icon.

Select **EZ Logger** on the menu.

Select **Logger Initialization** on the drop down menu.

The Logger Initialization screen will appear.



SET UP SCREEN:

Enter a description of the current recording that will remind you what the contents are at a later date.

The EZ Logger is synchronized to your computer's date and time.

Click **Next**.

Logger Initialization

Set Up | Start Time | Measurement | Alarm

Description of Recording

EZ Logger Test

Computer Time

Thursday, September 17, 2009 10:20:27 AM

Cancel <= Back Next =>

MEASUREMENT SCREEN:

Measurement lets you set the interval between measurements. The length of the interval determines the total duration of the recording time. Setting a shorter interval gives a shorter total duration. A larger interval gives a longer total duration. The minimum interval is 10 seconds.

Click **Next**.

Logger Initialization

Set Up | Start Time | Measurement | Alarm

Measurement Times

Duration of Recording:

1 Days 21 Hours 30 Min.

Interval Between Measurements

0 Hours 0 Min. 10 Sec.

Total Number of Measurements:

Cancel <= Back Next =>

START TIME SCREEN:

Click on one of the options on how you want the EZ Logger to start recording.

Start Immediately will start recording immediately after initialization.

Start Time lets you set a date and time for the recording to start.

Start Delay lets you set a delay before starting the recording.

Click **Next**.

Logger Initialization

Set Up | Start Time | Measurement | Alarm

Start Time

Start Immediately
Logger starts immediately after settings are written to logger.

Start Time
9/17/2009 10:22:23 AM

Start Delay
0 Days 0 Hours 0 Min.

Current System Time:
Thursday, September 17, 2009 10:22:23 AM

Cancel <= Back Next =>

ALARM SCREEN:

Alarm lets you set the High and/or Low Temperature Alarm conditions, and the High and/or Low Humidity Alarm conditions. Select and set as required, or leave them blank.

Click **Next**.

This will start the logger recording or begin the start delay count down.

Logger Initialization

Set Up | Start Time | Measurement | Alarm

Temperature Alarm

Enable

High 50 C Hold

Low 0 C Hold

Relative Humidity Alarm

Enable

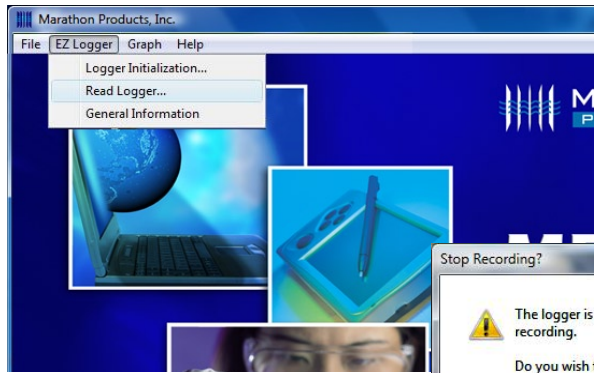
High 80 % Hold

Low 20 % Hold

Cancel <= Back Ok

Reading the EZ Logger

Start the **MDAS-Pro software** by double clicking on the icon.

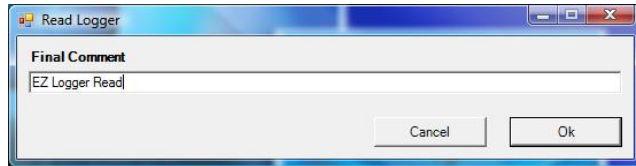


Select **EZ Logger** on the menu.

Select **Read Logger** on the drop down menu.

The Stop Recording Warning screen will appear.

Click **Yes** if you are ready to stop recording and continue.



The Final Comment window will appear. Enter a description of the current recording that will

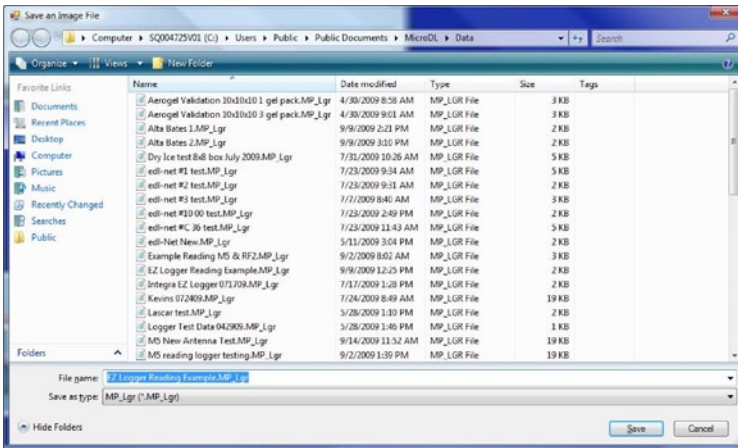
remind you what the contents are at a later date.

Click **OK**.

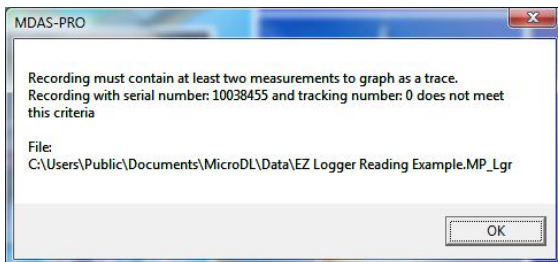
Give the new file a unique file name.

The new data file will be saved in the default directory.

Click **Save**.



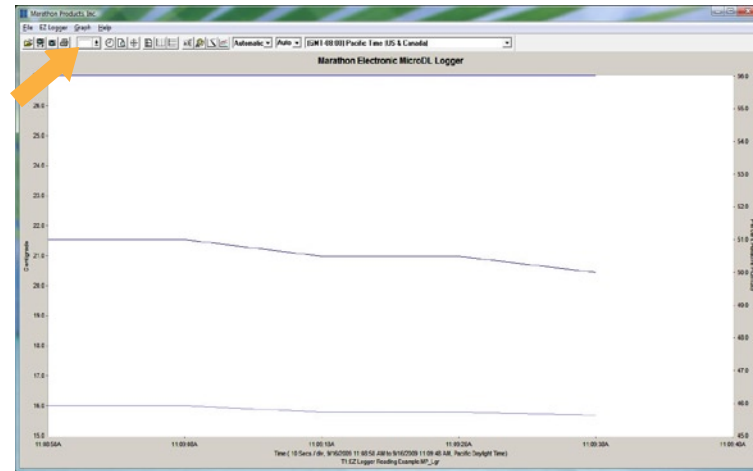
The EZ Logger must contain at least 2 measurements. If you try to read the EZ Logger before it has captured 2 data points you will see this warning. If this window appears click **OK** and wait for more time to pass.



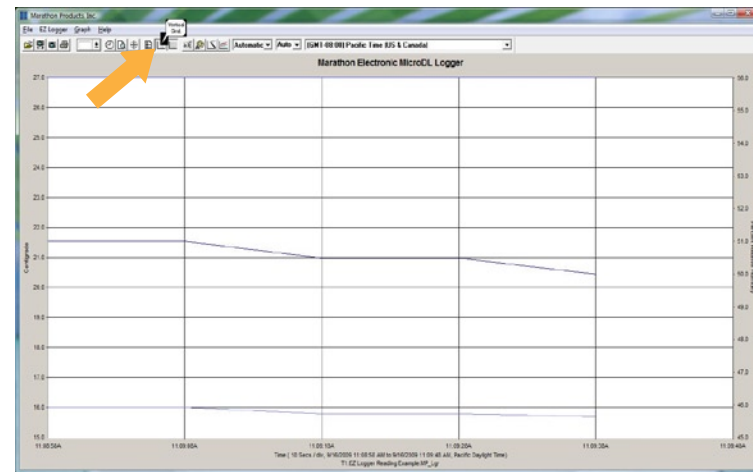
GRAPHING OPTIONS

The software will read the EZ Logger's data and display a plot of the temperature, humidity and relative humidity.

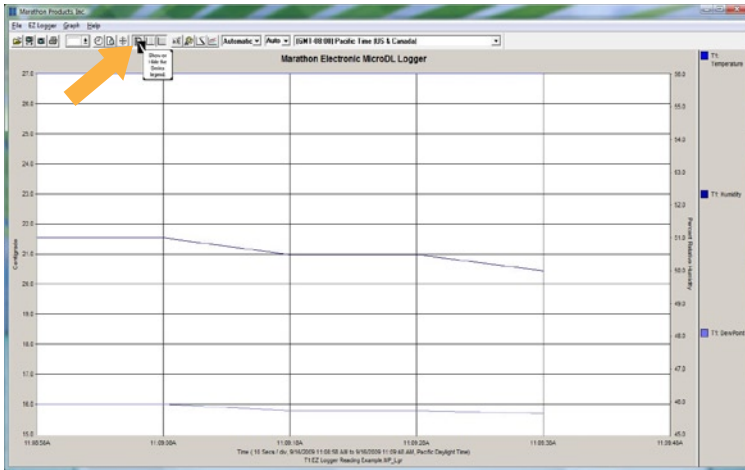
You can use the Menu Icons to change the properties of the plot display. Most of the Menu Icons are toggles to turn properties on or off.



For example, click on the colored rectangle to change the color of any of the plot areas. Click the color and select white. Then click and hold the color and drag it into the plot area.

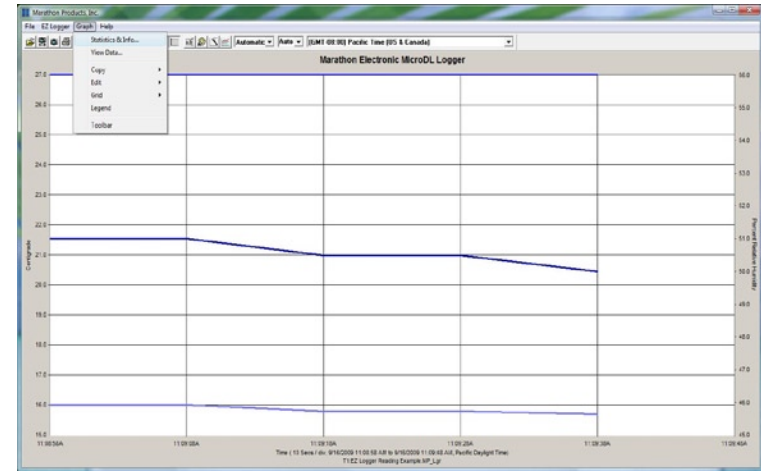


The **two icons** for vertical and horizontal grid lines turn the grid lines on and off.

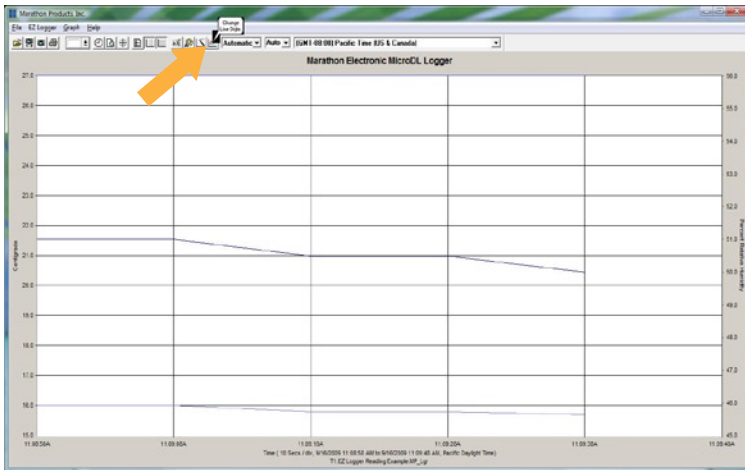


The **Legend Icon** turns the Legend area on and off. The legend can be dragged to a different area of the plot.

Another useful option is the **Statistics and Information** in the drop down menu under the Graph icon.

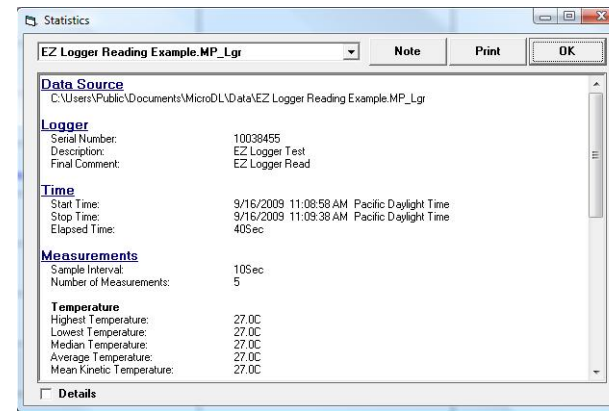


This will open a window showing the details of how the EZ logger was programmed and the data collected.

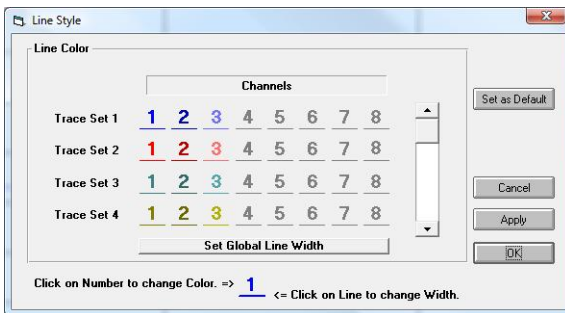


The **Change Line Style Icon** is used to change the color and width of the plot lines.

Click on the **Details box** for complete information.



Clicking on the **Change Line Style Icon** opens the Line Style window.



You can try clicking on the other menu icons.