

## MARATHON PRODUCTS

# edl™ Data Logger

*Get the facts!*

These multi-use data loggers are perfect for monitoring temperatures down to -40C (-40F) without a probe. Both units use thermistor technology and share the same basic palm-sized design so it's perfect where space limitations exist.

**The edl** is our top of the line data logger with 32k memory, 0.1C accuracy and resolution. This is a must have device if you work in a laboratory or metrology department.

**The edl-jr** is the work horse of our product line with a full 8k memory and the ability to measure down to -40C. A favorite in the pharmaceutical and transportation industries.

**Functions include:** start, stop, elapsed time as well as customizable time intervals.

Also available: user descriptions for initialization and for downloading the data; high and low alarm values, recording status, real time measurement display and more. View up to sixteen temperature profiles at a time; download data without stopping the original program; attach probes or an audio alarm; all with precision accuracy of +/- 0.1 degree C at center of range and traceable to NIST standards.

**Visual Alarms:** All our data loggers have the ability to program alarm limits. Should the temperature reach levels outside these limits, the onboard red LED will light until reset by the user.

**Computer Ready:** Marathon's easy-to-use software is available for Microsoft Windows 2000, XP and Vista. Our proprietary IC-9P serial cable is needed to download temperature information to a computer.



### Temperature Range

-40°C to +72°C  
-40°F to +160°F

### Temperature Accuracy

(NIST traceable)  
±0.1°C at center of range  
±0.3°C at extremes

### Measurement intervals

2 seconds to months

### Number of measurements

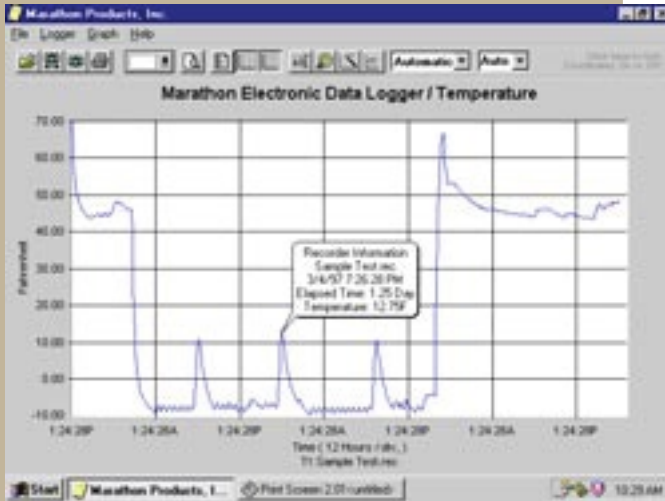
31,600 samples

**MARATHON**  
PRODUCTS, INC.

*Don't ship without us!®*

## MDAS Pro

Easy to use software provides clear graphs. Data can be exported to other Windows programs such as spreadsheet, word-processing or data-base. Available for Windows 98, NT, 2000, ME and XP. Language support for Chinese, English, French, German, Japanese, and Portuguese. Summer 2003 release: Code of Federal Regulations, 21 CFR Part 11 compliant version.



### To Order

edl-32k	Temp. data logger, 32k memory
edl-jr	Temp. data logger, 8k memory
MSPH-101	Marathon software history analysis program
IC-9P	Serial cable-9 pin serial connection cable with 25 pin/9 pin adaptor

### Accessories/Options

Model #	Description
SP16	External Probe: 16cm in length; 3.0mm in diameter; 1.8m cable
SP28	External Probe: 28cm in length; 3.0mm in diameter; 1.8m cable
MP8	External Probe: 8cm in length; 1.83mm in diameter; 1.8m cable
MP20	External Probe: 20cm in length; 1.83mm in diameter; 1.8m cable
MP Alarm	External Audio Alarm, powered by 4 AA Batteries

## edl Specifications

Memory EEPROM, Storage: 32k

Temperature Range:

High	+72°C / +162°F / 345.2°K
Low	-40°C / -40°F / 233.2°K

Temperature Accuracy:

At zero	± 0.1C at center of range,
At Extremes	± 0.3C at extremes

Measurement Interval: Programmable from 2 seconds to months

Temperature Sensor: NIST traceable Precision Thermistor

High and Low Alarm Limits: LED indicator set by temperature and time

Internal Clock Accuracy: Better than 2 minutes per month

Indicators: Power and Alarm

Computer Interface: Serial Port RS232 Cable, USB Converter

Internal Software Provides: Start and End time, Interval, User description, Alarm values, Recording status, Measurement data, Language selection, Temperature scale, Start delay.

Power Source: One 3.6 Volt Lithium Battery 2 Year Shelf Life

Size:

Inches	3.54(L) x 1.97(W) x .63(H)
Centimeters	9(L) x 5 (W) x 1.6(H)
Weight	1.85 oz./52.5 g.

For information on the edl and MDAS-Pro software please contact Marathon Products.

**Please call 1-510-562-6450 x607**  
for more information or to place an order.

[www.marathonproducts.com](http://www.marathonproducts.com)

627 McCormick St., San Leandro, CA 94577 ▪ [jperry@marathonproducts.com](mailto:jperry@marathonproducts.com)